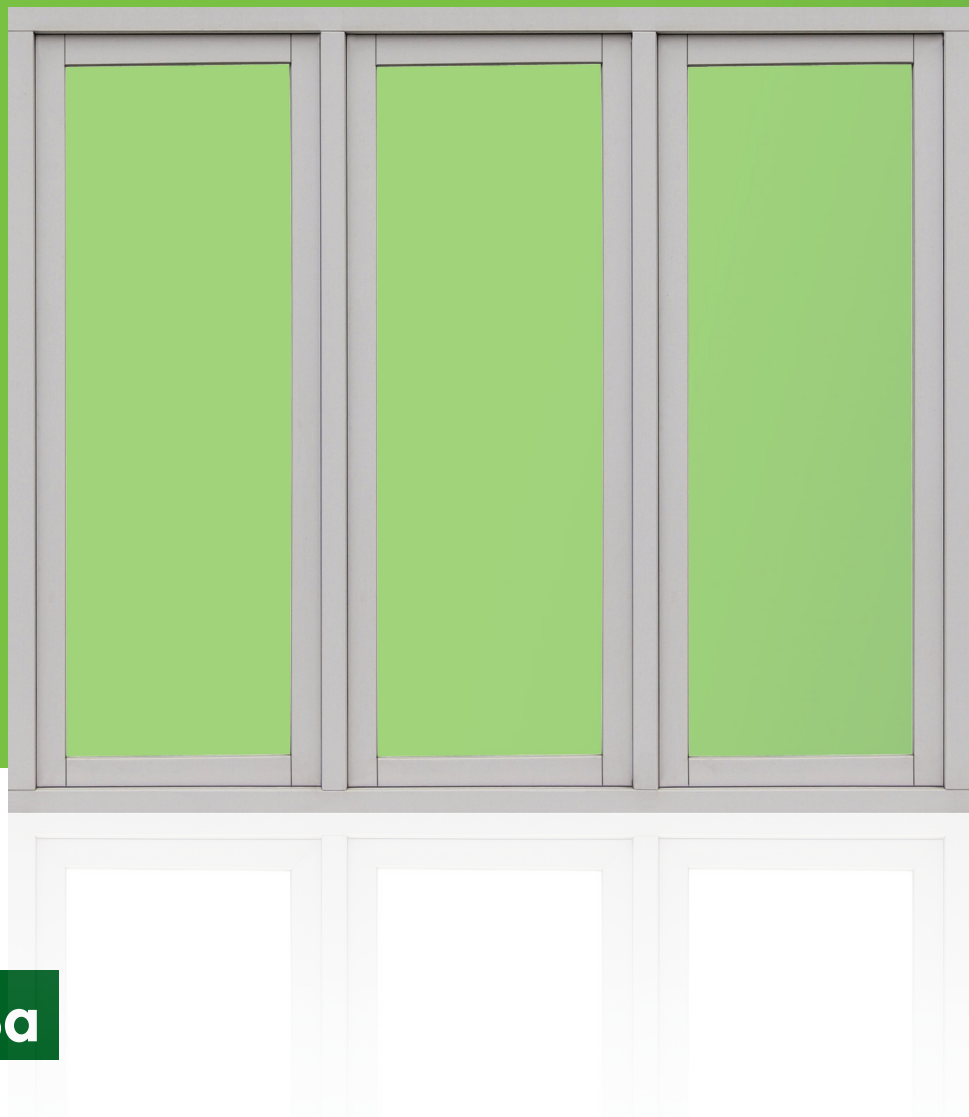


CASEMENTS

TIMBER &
ALU CLAD TIMBER



78t

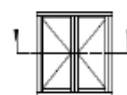
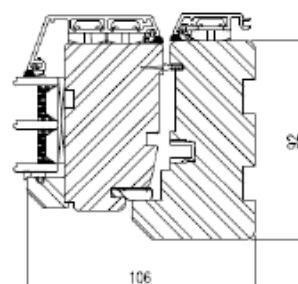
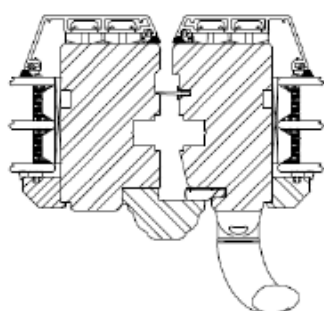
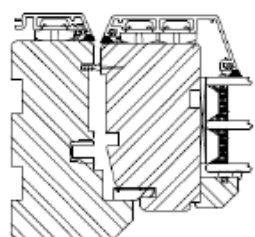
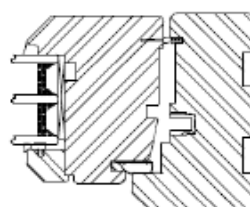
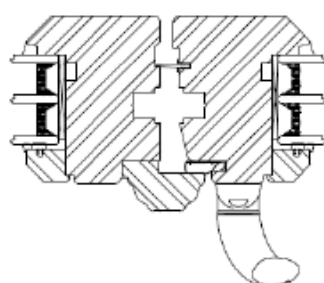
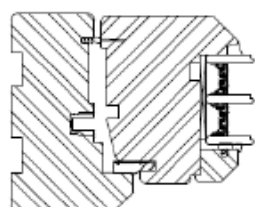
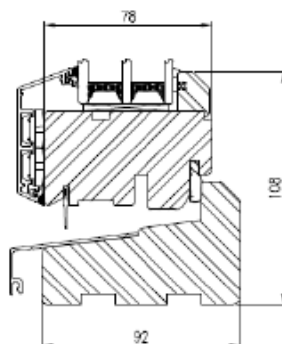
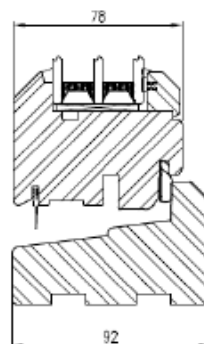
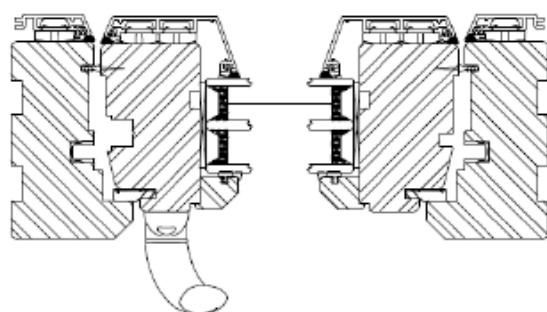
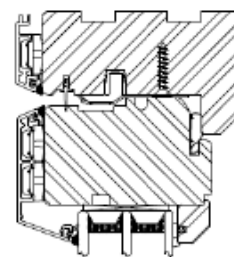
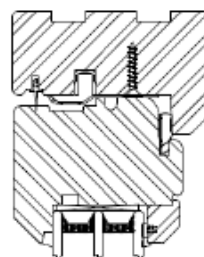
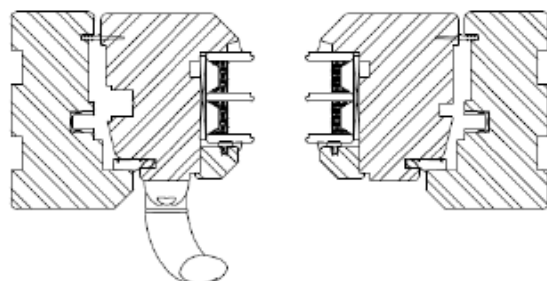
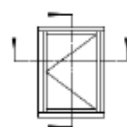
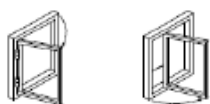
78a

SIDE HUNG

SIDE REVERSIBLE

78t

78a



CASEMENTS

TIMBER &
ALU CLAD TIMBER

Secured by Design



Police Preferred Specification

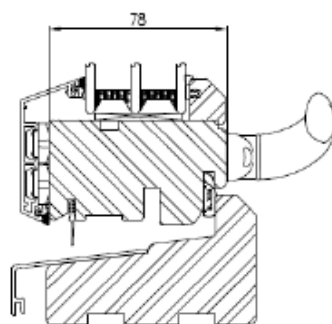
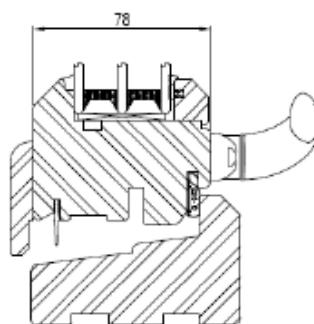
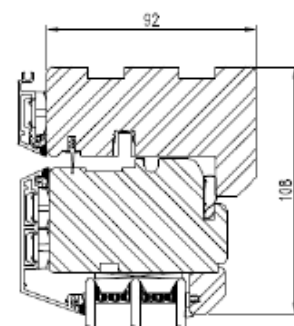
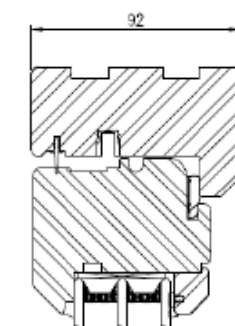
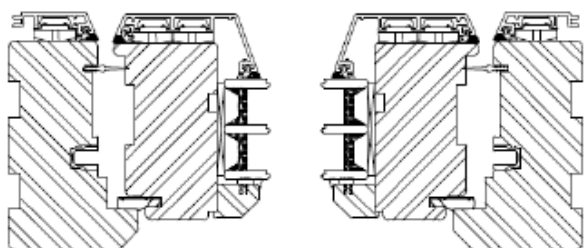
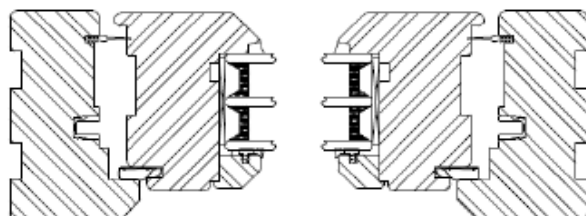
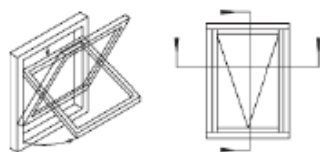
Enhanced
Security
Door



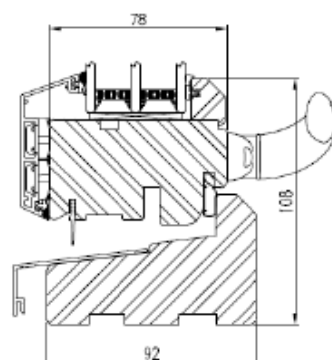
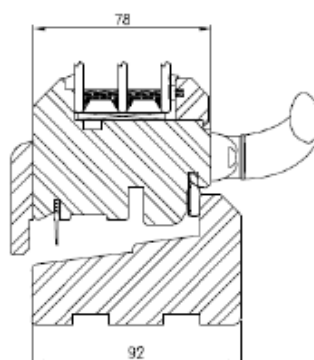
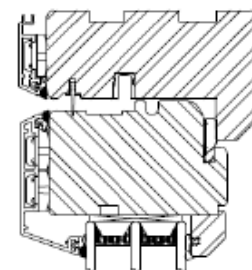
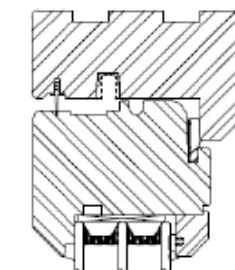
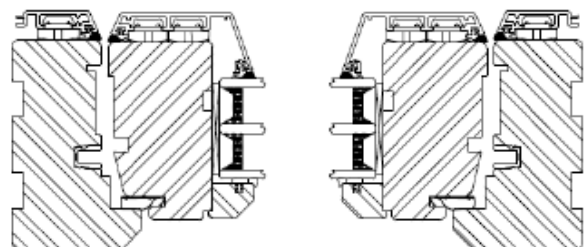
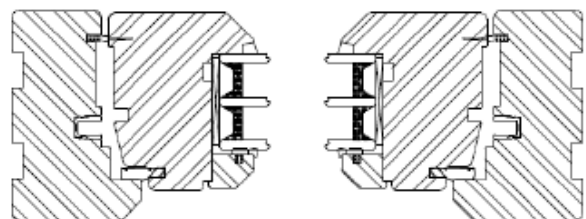
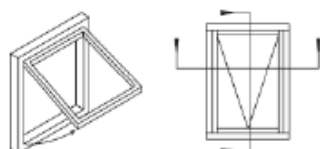
TOP REVERSIBLE

78t

78a



TOP HUNG



Secured by Design



Police Preferred Specification

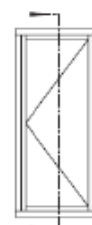
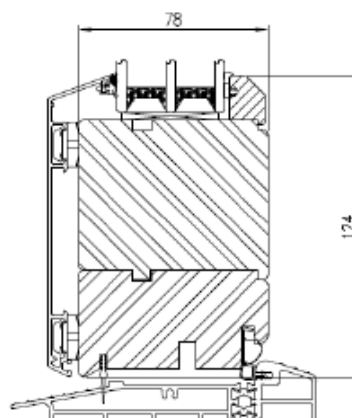
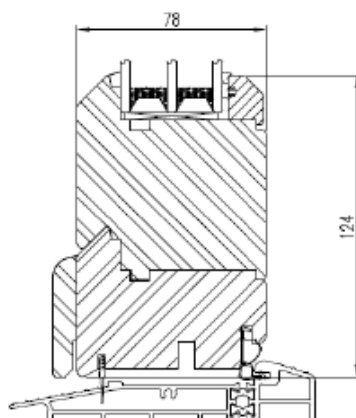
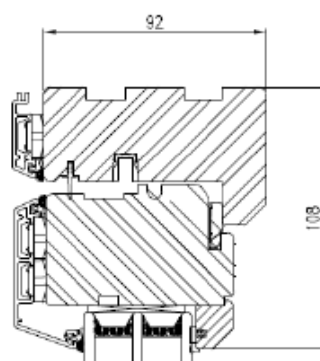
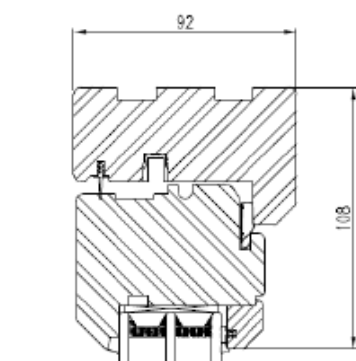
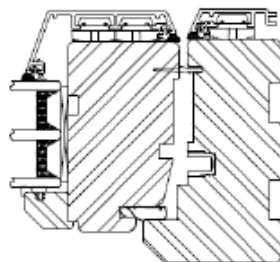
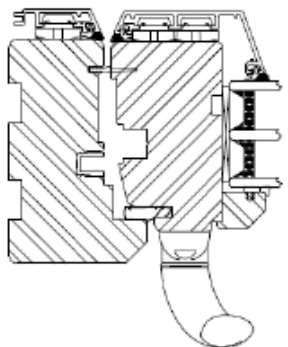
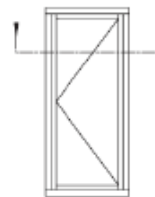
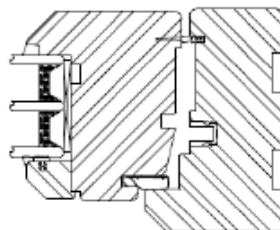
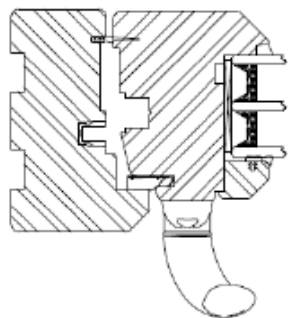
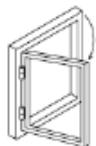


FENEX
WOOD WINDOWS

PATIO DOOR

78t

78a



CASEMENTS

FENEX CASEMENTS

ENHANCED DESIGN

The Fenex flush outward opening casement range is designed specifically with form, function and the future in mind.

The Fenex casements are available in two options. Firstly, a solid timber option, the natural beauty of timber and its insulating properties will enhance the warmth of any living environment. Secondly give the Fenex range a more contemporary look by adding a low maintenance external aluminium frame. This adds durability while maximising the design life of your windows. Both come with a full factory finish in single or dual colour based on your choice from the RAL colour pallet.

Fenex windows and doors are produced in our state-of-the-art factory on the outskirts of Istanbul. We are proud to employ the finest local craftsmen while at the same time incorporating the latest production, finishing and glazing technologies into our product range. The casement range's components are sourced from the industry leading names offering you peace of mind for many years to come.



MATERIALS:

Wood:

We use laminated scantlings certified FSC or PEFC

- PINE
- OAK
- RED GRANDIS

All our timber components are treated against insects, fungi and humidity, then stained or painted according to your choice with water based products.

- Stained finishes can be selected from our colour chart.
- Any RAL colour may be selected for painted finishes.

Aluminum:

All our alu components are anodised or thermolaquered according to your choice.

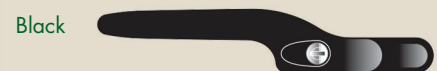
- Anodisation colours can be selected from our colour chart.
- Any RAL colour may be selected for lacquered finishes.

Seals:

- The seals between glazing and profiles are EPDM.
- The two peripheric seals are Q-LON (SCHLEGEL).

Ironmongery:

The highly regarded SPILKA hinges are used on all opening types. Handle options are at the next picture.





15% of the total thermal energy of an average residential building is lost through windows. FENEX casement windows are designed to safeguard the energy of our planet with the most ecological building material in the world: timber.

From simple side or top hung windows to sophisticated reversible casements, our products will satisfy the highly demanding world of building industry.

$$U_w \leq 1.20 \text{ W/m}^2\text{K}$$

with Double Glazing Units of $U_g=1.0 \text{ W/m}^2\text{K}$ and Warmedge

Max IGU thickness= 44 mm



FENEX Windows Ltd
26 St Cross Street, Clerkenwell,
London EC1N 8UH ENGLAND
T: +44 (0)789 9247994
www.fenexwindows.co.uk

SELECTRON Ltd. Şti.
Atatürk Bulvarı,
Köstemir Yolu Cad. No: 74
Silivri 34570 İstanbul / TÜRKİYE
T: +90 212 7360801
www.arbor.com.tr

ARBOR SAS
16 Rue Séjourné
94000 Créteil / FRANCE
T: +33 (0) 1 43 77 56 36
www.arborfenetres.fr

Secured by Design

Police Preferred Specification

Enhanced
Security
Door

